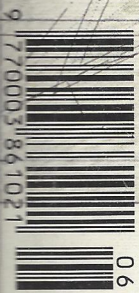


UK £5.95  
USA \$11.95  
JUNE 1996

An EMAP Business Publication



# THE ARCHITECTURAL REVIEW

ONE HUNDRED YEARS OF EXCELLENCE IN ARCHITECTURE AND DESIGN

**BUILDING FOR EDUCATION**  
**Hecker's sunflower**  
**Singapore Stirling and Wilford**

from the library of  
**willbruder architects**  
studio@willbruder.com

AR 1896-1996  
**96**

## Founded 1896

### Published monthly

Emap Construct, 151 Rosebery Avenue,  
London EC1R 4QX, UK  
Tel: +44 171 505 6725; fax: 171 505 6701

### Editor

Peter Davey 171 505 6725

### Deputy Editor

Catherine Slessor 171 505 6726

### Assistant Editor

Penny McGuire 171 505 6728

### Production Editor

Julia Dawson 171 505 6729

### Art Editor

Michelle Ashenden 171 505 6727

### Editorial Administrator

Lynne Jackson 171 505 6725

### Advertisement Manager

Neil Williams 171 505 6735

### Deputy Advertisement Manager

Charles Glover 0171 505 6736

### Midlands Manager

Midge Myatt

Tel/fax: 01902 851645

### Northern Manager

Graham Kinsey

Tel: 0161 905 2422; fax: 0161 905 2412

### Japanese Advertising Sales

Eiji Yoshikawa

Tel: (03) 3327 2688; fax: (03) 3327 3010

### Italian Advertising Sales

Cesare Fiorucci

Tel: (02) 58.31.02.19; fax: (02) 58.31.57.10

### Publishing Assistant

Sophie Fenlon 0171 505 6740

### Production

Samantha Walters 0171 505 6737

### Circulation Marketing Manager

Mike Aplin

### Publishing Director

Rowan Crowley

### Managing Director

Tim Brooks

### Subscription Rates

UK - £54

UK students - £40.50

(UK subscribers only can benefit from a special low subscription rate with The Architects' Journal - £99 or £78 for students) Americas - \$85

Americas students - \$65

Rest of World - £64

Rest of World students - £48

Copies are sent surface mail. Airmail rates on application. American copies air-speeded to New York.

Please use the order form in this issue to

receive your own copy, or contact our Subscription Department at Audit House, Field End Road, Eastcote, Ruislip, Middlesex, HA4 9BR, UK.

Tel: +44 181 956 3018; fax: 181 956 3020

North, Central and South American

subscribers: please send orders and queries to

Fenner, Reed and Jackson, P.O.Box

754, Manhasset, NY 11030-0754

Tel: +1 516 627 3836; fax: 516 627 1972

### Back Issues

For prices, contact CRC. Tel: +44 171 505 6622 or fax +44 171 505 6606

Bound volumes (UK only): contact John Lawrence. Tel: 01234 346692

**US Postmaster:** The AR (ISSN 0003-861X) is published monthly for \$85 per year. Second-class postage paid at Manhasset NY and additional mailing office.

**ABC**  
AUDIT BUREAU OF CIRCULATIONS

ABC BUSINESS PRESS

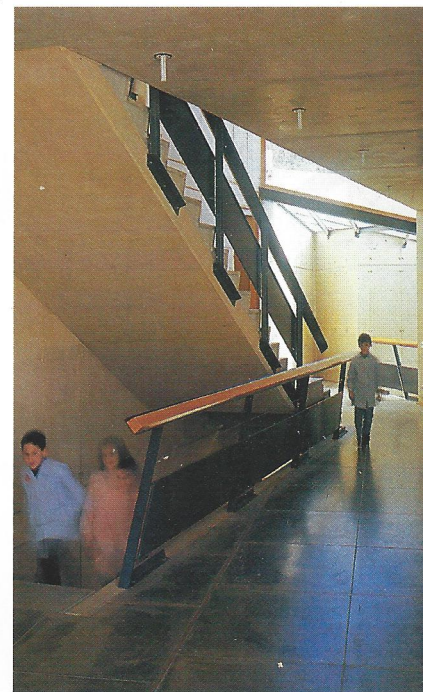
Circulation 21 285 (July 1995 - Dec 1995)

© Emap Construct 1996

**emap**  
CONSTRUCT



Studios contextualty in Bloomsbury, by Nicholas Hare Architects, p68



Carme Pinós' remarkable boarding school, p43

## June 1996 Volume CXCIX No 1192

## BUILDING FOR EDUCATION

	<b>COMMENT</b>	
<b>4</b>	<b>School terms</b> The importance of placemaking as a component of creative education	
	<b>PRELIMS</b>	
<b>11</b>	<b>News, exhibitions and letters</b> Morris centenary exhibition; Dom Bellot; AR/Corfield Photographic Competition	
	<b>DESIGN REVIEW</b>	
<b>18</b>	<b>Heightened tension</b> Tension Net staircase	JAMES CARPENTER DESIGN ASSOCIATES
	<b>OUTRAGE</b>	
<b>21</b>	<b>Stop the rot</b> Sad decay of Cuba's National Schools of Art	RICARDO PORRO
	<b>INTERIOR DESIGN</b>	
<b>25</b>	<b>Canal plus</b> Publishing house, Paris, France	ATELIER CANAL
<b>29</b>	<b>Social grace</b> IGAS headquarters, Paris, France	ALAIN MOATTI AND JACQUES MOUSSAFIR
<b>35</b>	<b>THEME</b>	
<b>36</b>	<b>Scholastic sunflower</b> Heinz-Galinski School, Berlin, Germany	ZVI HECKER
<b>43</b>	<b>Lyrical geometry</b> Boarding school, Morella, Spain	CARME PINOS
<b>48</b>	<b>Building Utopia</b> Temasek Polytechnic, Singapore	JAMES STIRLING, MICHAEL WILFORD & ASSOCIATES
<b>63</b>	<b>Kasbah quads</b> Faculty of Economics and Management, Utrecht, the Netherlands	MECANOO
<b>68</b>	<b>Hare's breadth</b> Islamic Arts Centre and Brunei Gallery, University of London	NICHOLAS HARE ARCHITECTS
<b>74</b>	<b>Urbane artistry</b> Art school, Kankaanpää, Finland	KOUVO & PARTANEN
<b>78</b>	<b>Dam good</b> Rock Art Center, Deer Valley, Phoenix, Arizona, USA	WILLIAM P. BRUDER ARCHITECT
	<b>PLANNING</b>	
<b>82</b>	<b>Groves of academe</b> Master plan for University of North Carolina, Charlotte	EDWARD CULLINAN ARCHITECTS
	<b>PRODUCTS SURVEY</b>	
<b>87</b>	<b>Didactic furniture</b> Including Euroluca and Confair	
	<b>BOOKS</b>	
<b>96</b>	<b>Reviews</b> S,M,L,XL; Charles and Ray Eames; Environmental Tradition; Scottish architecture 1560-1660; Finding Form	
	<b>DELIGHT</b>	
<b>98</b>	<b>Stairway to the stars</b> Explorations in stained glass	JOHN PATSALIDES
	<b>COVER</b>	
	<b>Drawing by Zvi Hecker of Heinz-Galinski School in Berlin (p36)</b>	