

THE ARCHITECTURAL REVIEW

UK £5.95 USA \$11.95 OCTOBER 1998

SUBSCRIPTIONS

To subscribe please use the card in this issue
Tel: +44 181 956 3140
Fax: +44 181 956 3023
E-mail: custserv@readerlink.emap.co.uk

UK	£ 54
UK student	£ 40.50
Overseas	£ 64
Overseas student	£ 48
Overseas airmail	£ 99
Americas	\$ 85
Americas student	\$ 65

American copies are air speeded to New York. UK subscribers can benefit from a special joint subscription rate with The Architects' Journal of £99 or £78 students.

DELIVERY & ADDRESS CHANGES

To notify us of any delivery problems or a change of address:
Emap Readerlink, tel: +44 181 956 3140;
fax: +44 181 956 3023
E-mail: custserv@readerlink.emap.co.uk
You can also write to AR subscriptions, Emap Readerlink, Audit House, 260 Field End Road, Eastcote, Middlesex, HA4 9LT, UK.
American subscribers – contact Fenner, Reed & Jackson, PO Box 754, Manhasset, NY 11030-0754. Tel: +1 516 627 3836; fax: +1 516 627 1972.

BACK ISSUES

CRC tel: +44 171 505 6622;
fax: +44 171 505 6606
E-mail: crc@construct.emap.co.uk

The Architectural Review (ISSN 0003-861X) is published monthly for \$85 per year by EMAP Construct, RML c/o Yellowstone International, 87 Burlews Court, Hackensack NJ 07601. Periodicals Postage Paid at South Hackensack and additional mailing offices.

THE ARCHITECTURAL REVIEW

FOUNDED 1896

Published monthly
Emap Construct, 151 Rosebery Avenue, London, EC1R 4GB, England.
E-mail: lynnej@construct.emap.co.uk

EDITORIAL

Editorial Director and Editor
PETER DAVEY 0171 505 6725
Deputy Editor
CATHERINE SLESSOR 0171 505 6726
Art Editor
MICHELLE ASHENDEN 0171 505 6727
Assistant Editor
PENNY MCGUIRE 0171 505 6728
Production Editor
JULIA DAWSON 0171 505 6729
Editorial Co-ordinator
LYNNE JACKSON 0171 505 6725

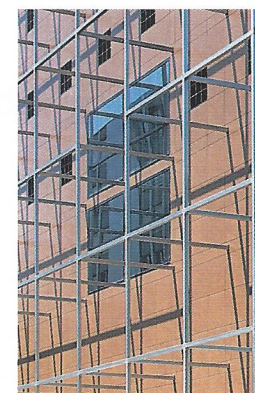
ADVERTISING

Associate Publisher
NEIL WILLIAMS 0171 505 6735
E-mail: neilw@construct.emap.co.uk
Advertisement Manager
CHARLES GLOVER 0171 505 6736
Advertising Sales
DANIELLE HUDSON 0171 505 6742
Italian Advertising Sales
CESARE FIORUCCI
Tel: +39 02 58.31.02.19; fax: +39 02 58.31.57.10
E-mail: fiorint@tin.it
Production
NICOLA DORAN 0171 505 6741
Circulation Marketing Manager
MIKE APLIN 0171 505 6615
Publishing Director
ROWAN CROWLEY 0171 505 6618
Managing Director
SIMON MIDDELBOE

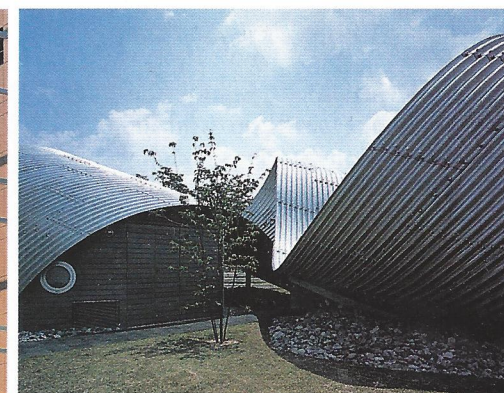
ABC BUSINESS PRESS
Circulation 23 000 (July 1996 - June 1997)
© Emap Construct 1998

emap
CONSTRUCT

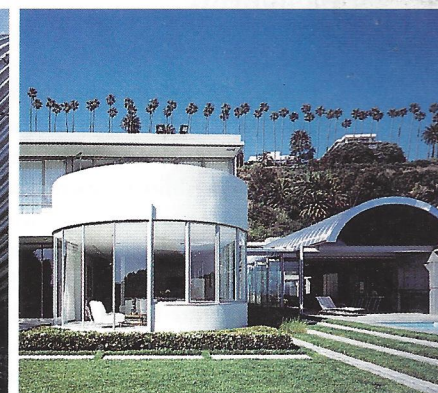
OCTOBER 1998 VOLUME CCV NO 1220



Catholic cube (p52)



Endo's metal curves and swirls (p49)



Ehrlich's Neutra extension (p77)

METAL

COMMENT

- 4 The symbiosis between metal and architecture

VIEW

- 17 At the End of the Century in Japan; Zumthor's Carlsberg; Plečnik in Brussels; de Hooch show

DESIGN REVIEW

- 32 Telecommunications mast, Ann Arbor, Michigan, USA GUNNAR BIRKERTS

THEME

- 38 Cultural centre, Lucerne, Switzerland JEAN NOUVEL
44 Winery, Yountville, USA HERZOG & DE MEURON
49 Public lavatories and park-keeper's flat, Hyogo Prefecture, Japan SHUHEI ENDO
52 Church, Paris, France ARCHITECTURE STUDIO
56 Golf club, Shah Alam, Selangor, Malaysia T. R. HAMZAH & YEANG
60 Trade hall, Hanover, Germany VON GERKAN, MARG & PARTNERS
63 House, Prickwillow, England JONATHAN ELLIS-MILLER
66 Rafting centre, Jackson, Wyoming, USA WILLIAM P. BRUDER

PLACE

- 68 Three schemes that explore and celebrate place PETER ZUMTHOR

INTERIOR DESIGN

- 77 House extension, Santa Monica, California, USA STEVEN EHRLICH
82 House, Ealing, London McLEAN QUINLAN

BOOKS

- 88 Representation of place; DEGW; plumbing; Ancient Egyptian gardens; Villa Ottolenghi

DELIGHT

- 90 Forth Bridge, Scotland

COVER

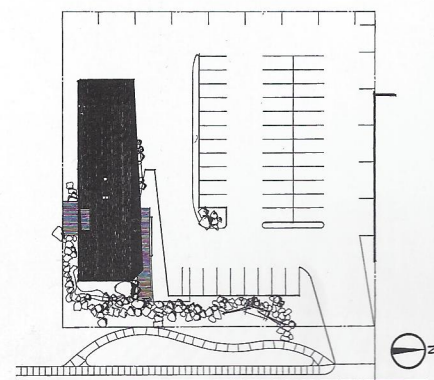
- 38 JEAN NOUVEL Cultural centre, Lucerne, Switzerland Photograph by Paul Raftery



AL Nouvel in Lucerne Curvaceous Endo Zumthor's Carlsberg

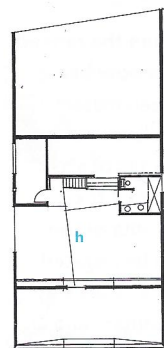
Drawing its inspiration from the vernacular ranch and services structures of Wyoming, Will Bruder's monolithic, rusting wedge houses facilities for a young company engaged in whitewater rafting trips.

BOAT HOUSE

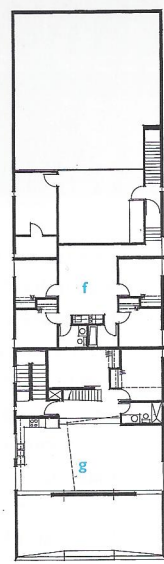


site plan

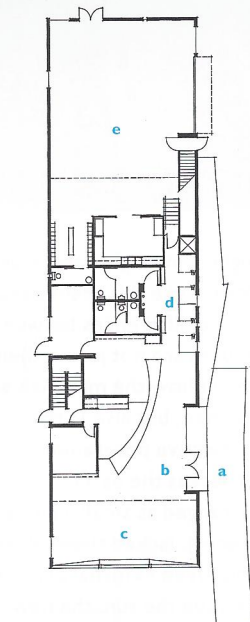
- a stoop
- b entrance hall and reception
- c shop and museum
- d changing cubicles
- e clothes and equipment storage
- f staff bunkhouse
- g living loft
- h loft mezzanine



first floor mezzanine



first floor



ground floor
(scale approx 1:400)

Wyoming's Snake River provides many sorts of diversions for outdoor types, including the thrillingly perilous activity of whitewater rafting. The fittingly named Mad River Boat Trips run rafting tours of the river and Will Bruder has designed a building to house the company and its associated activities. A brooding wedge-like form clad in rusted steel, the new building recalls the vernacular ranch and services structures of the Wyoming landscape and creates a totemic landmark in a nondescript commercial highway strip.

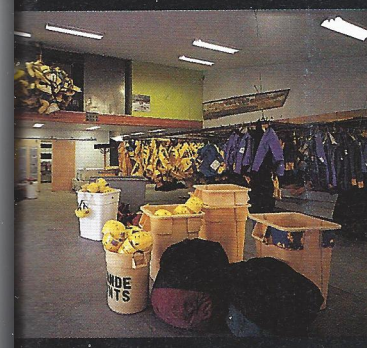
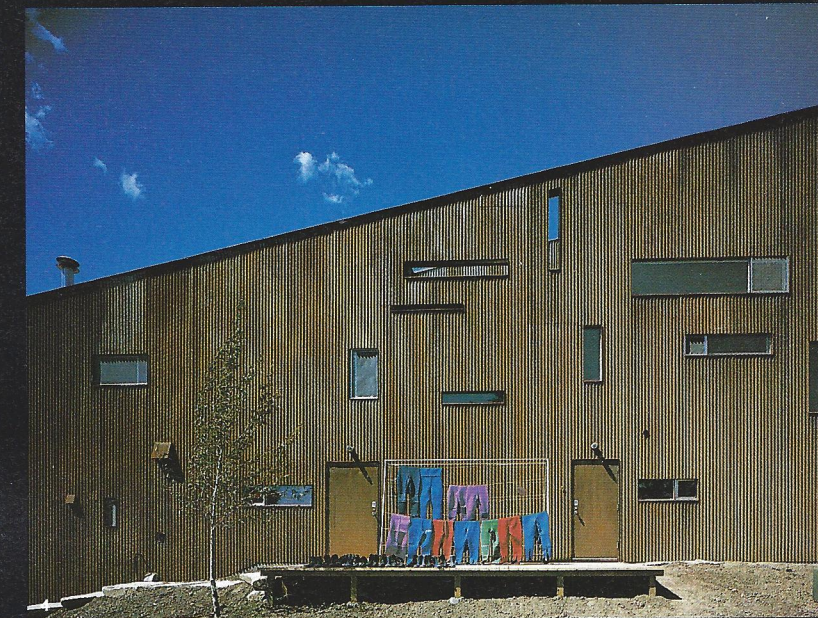
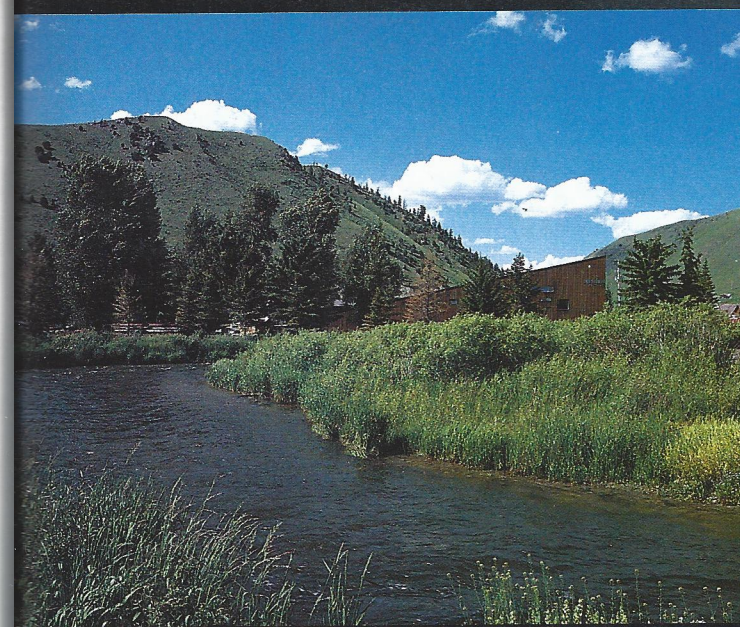
Arranged within the volume of the giant wedge are a warehouse for clothing and equipment storage, retail space, a small museum documenting the history of the river and a bunkhouse for the guides who supervise the expeditions. A low concrete and duckboard stoop marks the main public entrance, which is incised into the long north side of the building. The reception hall is dominated by a translucent blue fibreglass counter that curves through the space like a pulsating wave. Tucked into the low west end of the wedge are the equipment warehouse and adjoining changing facilities. The cellular staff bunkhouse occupies the first floor level above the changing area. The tall east end of the building is fully glazed, exposing the shop's wares and the museum's collection of coracles, rafts and canoes which are slung from the ceiling. Occupying the prow of the wedge, the owner's living

quarters, office and library are contained in a loft space suspended above the shop and museum.

The building appropriates basic timber-frame technology and utilitarian materials to bold effect. The upper floor is suspended from glulam roof beams, avoiding internal structural columns and so increasing the flexibility of the ground floor layout. Crisply detailed timber and steel trusses support the tall glass wall on the east elevation. Walls and roof are wrapped in a taut skin of corrugated steel sheeting coated in a patina of rust, giving the building the monolithic, industrial quality of a Richard Serra sculpture. Windows are punched apparently at random into the great rusting flanks of the wedge. Visceral shots of colour – yellow fibreglass cubicles, a yellow wall in the entrance hall, purple and red wetsuits – also animate the stark composition. Bruder's rugged Wild West regionalism is underscored by a pragmatic concern for users and context. As in previous small projects (for instance the Teton County Library, AR June 1998), this latest building combines a poetic elemental simplicity with tectonic inventiveness.

EFFIE C. MACDONALD

Architect
William P. Bruder, New River, USA
Photographs
Bill Timmerman



- 1 The rusty wedge appears to grow out of the landscape.
- 2 North elevation, with entrance stoop and randomly punched windows.
- 3 The tall glazed east end shows off the river museum's wares.
- 4 The rusting carapace recalls Wyoming's vernacular ranch and service structures.
- 5 A warehouse for clothes and equipment storage is tucked into the low west end of the wedge.
- 6 The owner's living loft occupies the prow of the wedge.
- 7 Museum and shop, with the museum's collection of rafts and canoes slung from the ceiling.

