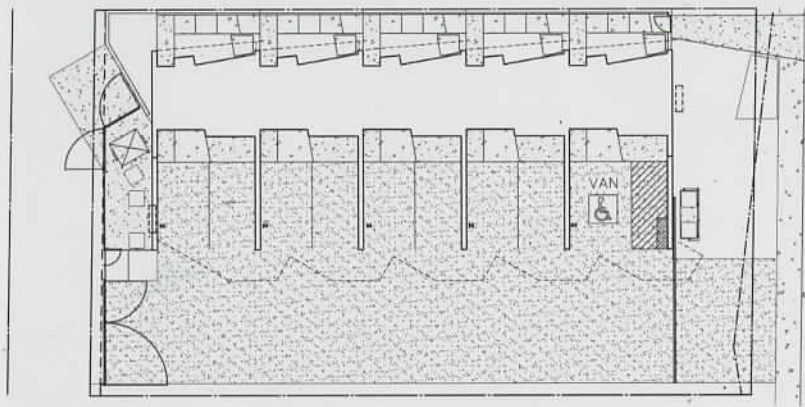




6	Introduction
8	Skybridge
20	Greenwich Street
30	Stare Street Village, IIT
42	Colorado Court
48	Bergamot Artists Lofts
56	Cannery Lofts
66	Loloma 5
74	Espiritu Santo Plaza
82	Coral Sea View
90	Humboldt Mill Condominiums
98	Ilona
106	The Flower Tower
114	Lee Building
122	Seewurfel
130	Apartments in Zürich
138	Lofts in Zürich
148	One Centaur Street
156	Silodam
168	Charlottehaven
176	Luxury Apartments Mauritskade
186	Apartments in Sabadell
196	Getsewoud Housing
206	Raines Court
218	City Gate
226	Metalika Apartments
234	150 Liverpool Street
244	Kings Lane
254	138 Barcom Avenue
266	The Grid
276	Alair
286	Apartments in Arai Yakushi
298	Mesh
306	Nagoya Apartments
314	Shinonome
324	The Garden Tower
332	Directory

Loloma 5 | Scottsdale, AZ, USA | 2004

Will Bruder Architects

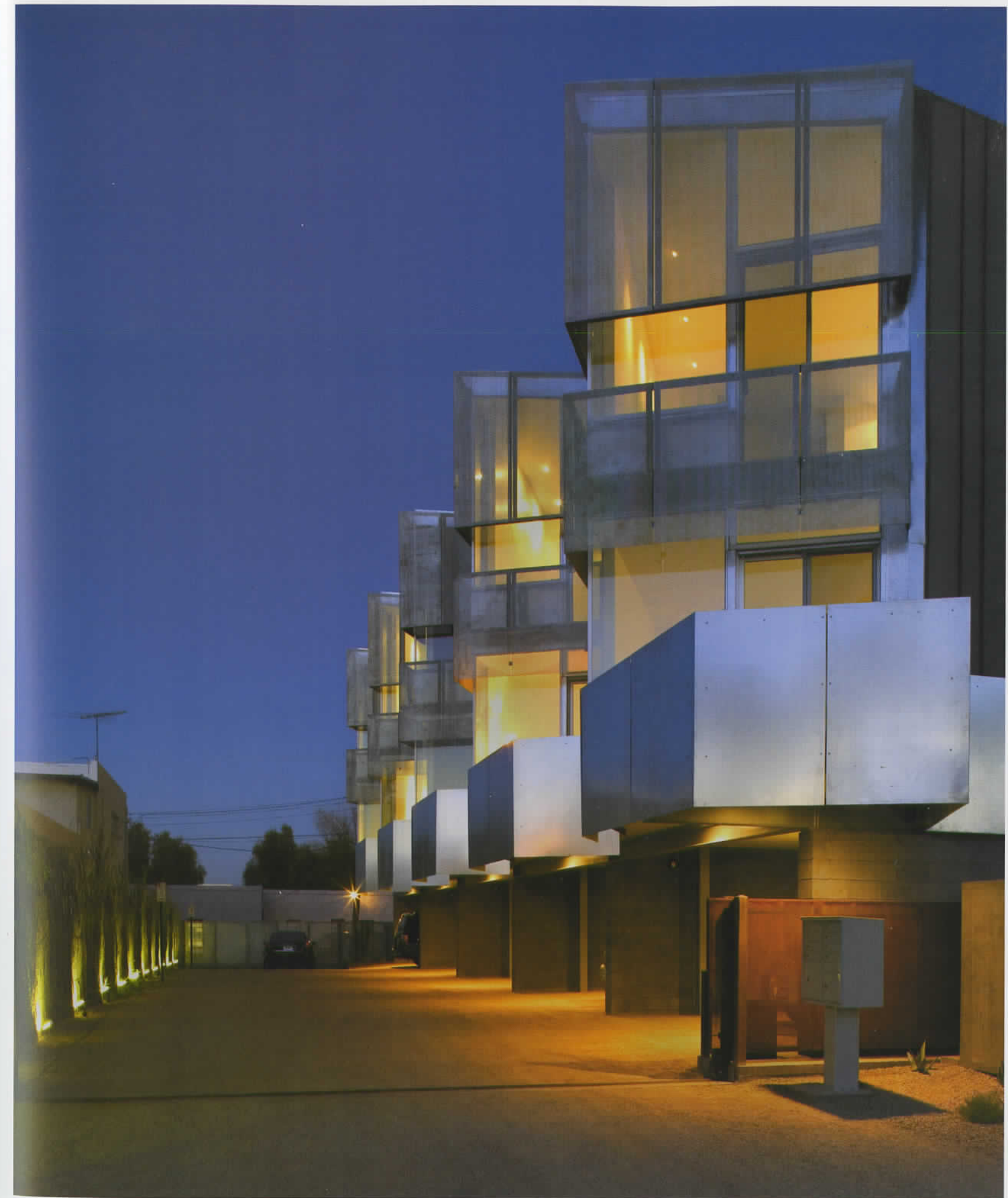


Site plan

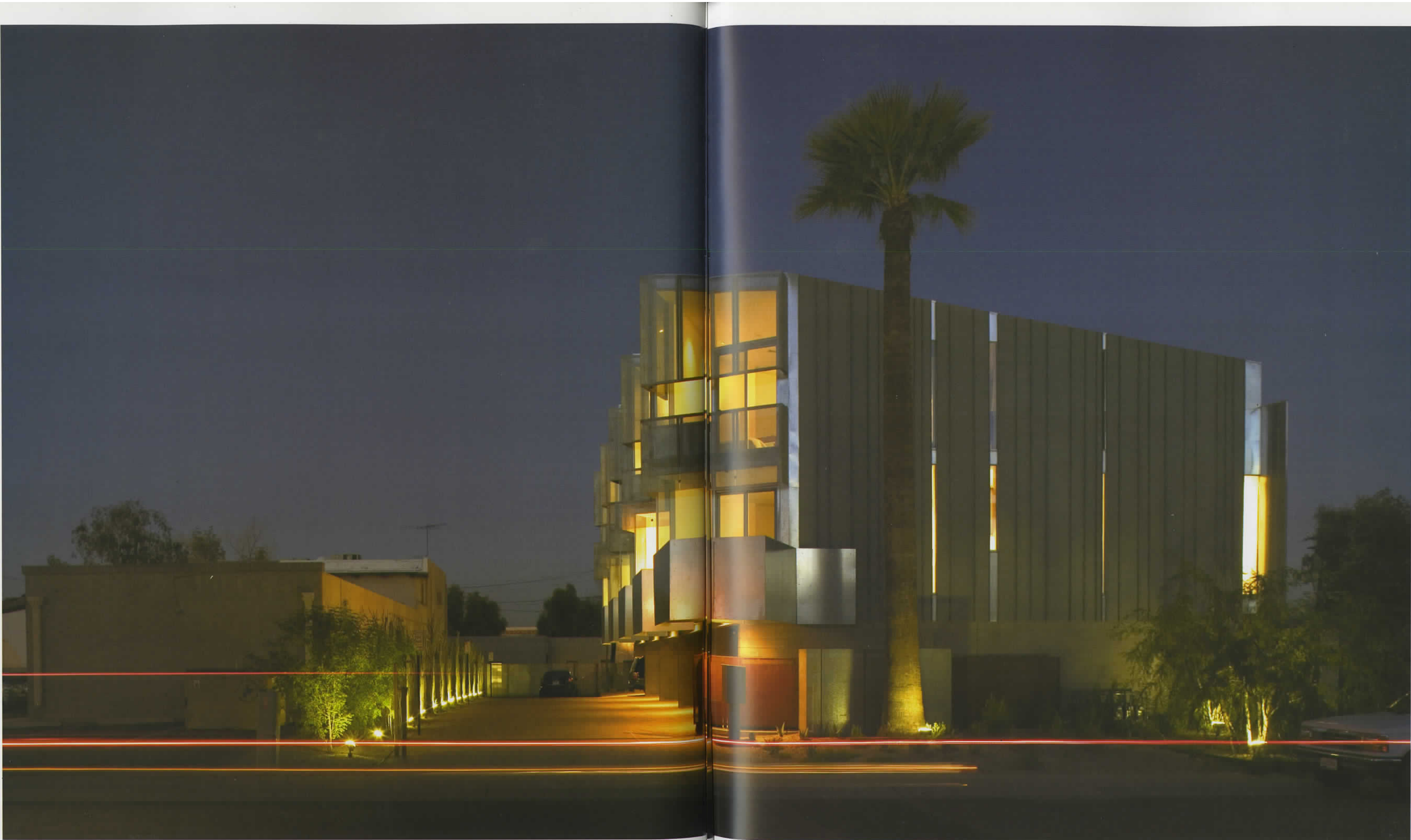
Home to some of the world's most innovative modern architecture since the 1930s, including that of Frank Lloyd Wright and Paul Schweiker, the town of Scottsdale combines a friendly, Old West downtown image with a zeal for contemporary design. Thus, much of the town's architecture is inspired by an array of factors, including prehistoric ruins, Hispanic design, and the modern masterworks.

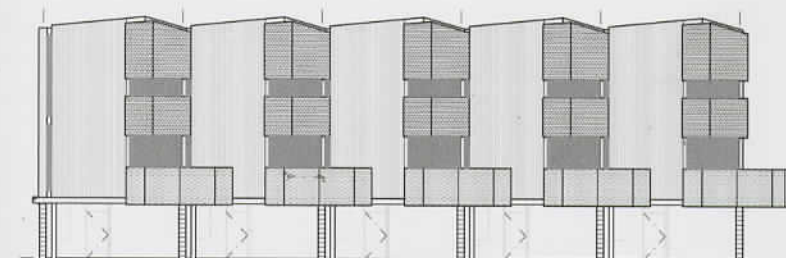
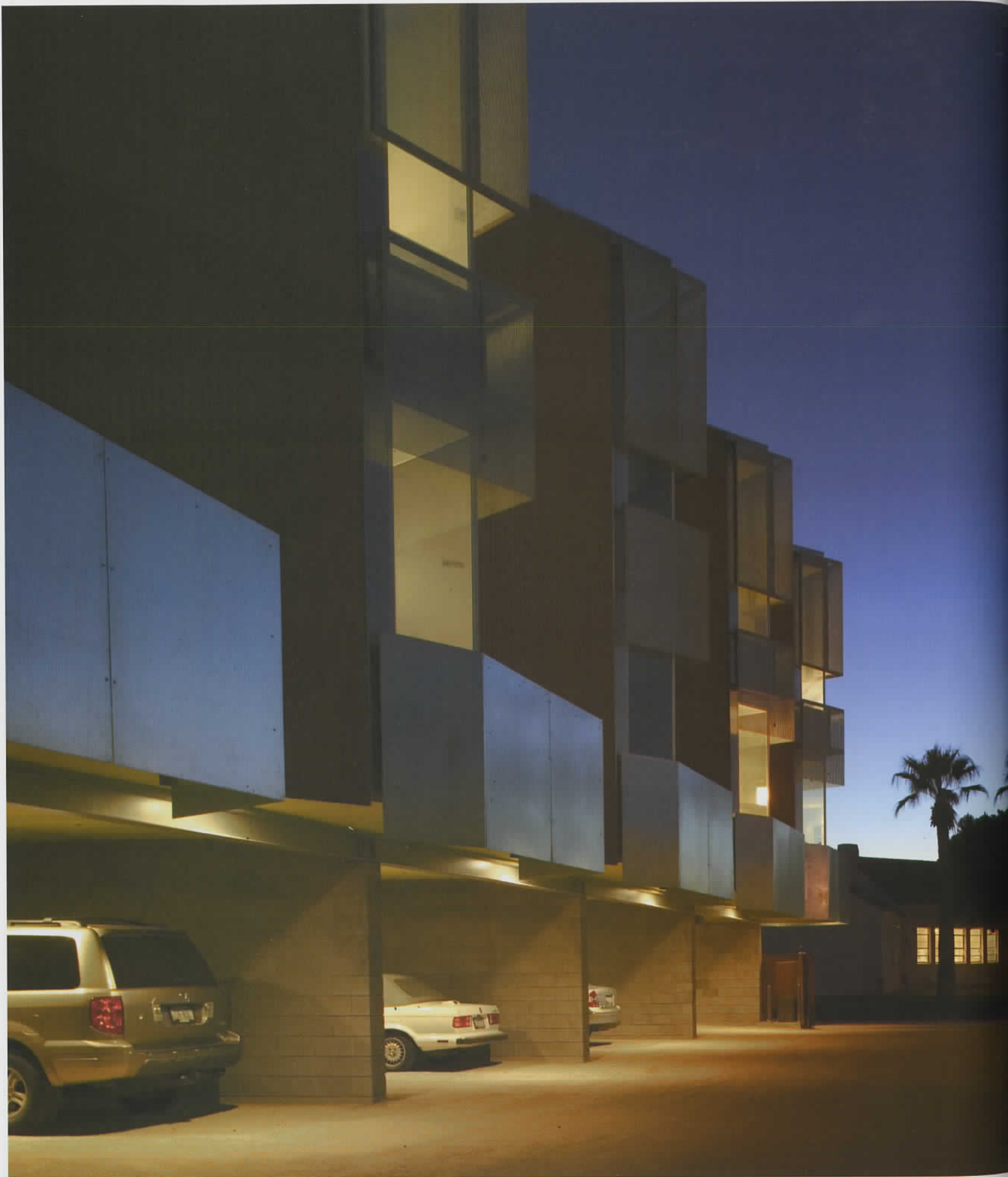
Today, new architecture has replaced the wooden clapboard of the past with simple metal skins of galvanized stainless steel, influenced by the articulated masonry, deep overhangs, and metallic screens characteristic of late twentieth-century buildings. The Loloma 5 project fully illustrates this evolution, aspiring to create a live/work environment in the heart of Scottsdale that celebrates both its historical and its physical context.

Anchored to the terrain by a sandblasted concrete plinth, the building rises 34 feet off the ground into a horizontal composition articulated by four clearly distinct façades. On the northern side, a series of folding blocks that define each unit, characterized by perforated aluminum scrims and aluminum-plate cantilevered balconies, are angled to capture the dramatic mountain view. The south façade features vertically angled planes in corrugated panels, punctured by simple glass squares. Along the west side, narrow, recessed, vertical windows of varying widths and ribbed zinc cladding shield the apartments from the sun. The east façade mimics the latter, with its ribbed sheets of weathered rusty steel. A careful balance of scale, proportion, mass, and finely articulated details and materials, this apartment complex represents the architectural values of Scottsdale and its aspirations for design quality and uniqueness.

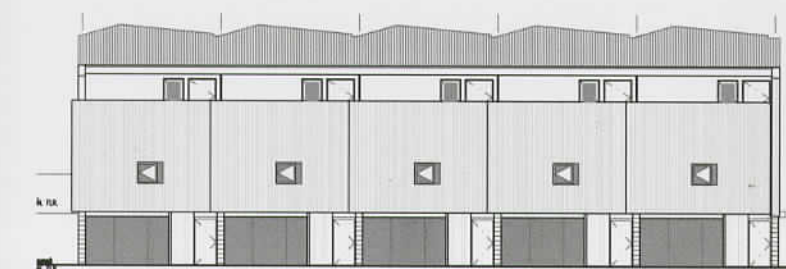


© Bill Timmerman





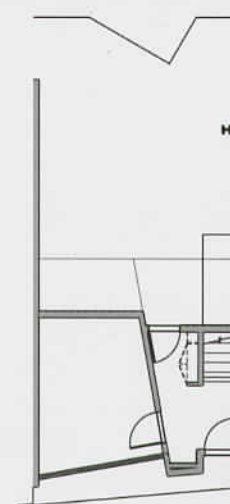
North elevation



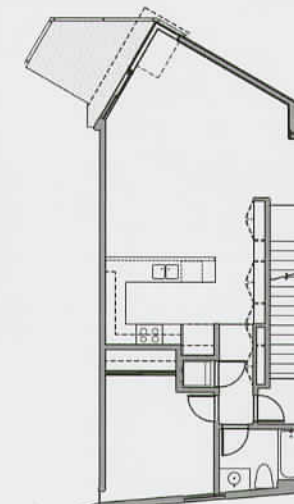
South elevation



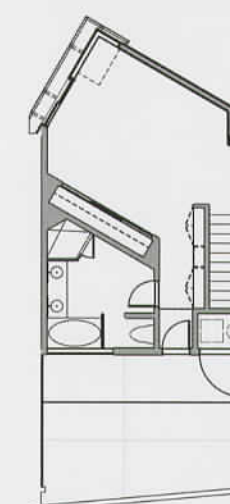
A landscaped porch on the south side of the building incorporates an attractive contrast of color through the use of plants, brightly painted walls, and the natural rusty tone of the corrugated panels.



Ground floor plan



First floor plan



Second floor plan