

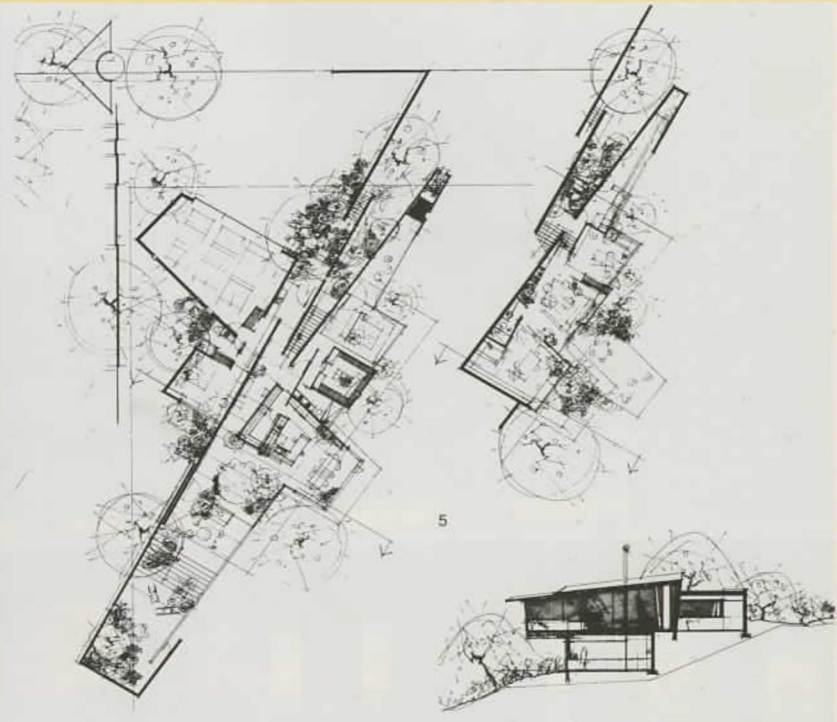
# THE PHAIDON ATLAS

## OF CONTEMPORARY WORLD ARCHITECTURE

PHAIDON



914	Scottsdale, Arizona, USA	Byrne House	Will Bruder Architects	1999 RES	915 CUL Scottsdale, AZ, USA	939 RES Massachusetts, USA
915	Scottsdale, Arizona, USA	Scottsdale Center for Contemporary Art, Gerard L Cafesjian Pavilion	Will Bruder Architects	1999 CUL	914 RES Scottsdale, AZ, USA	939 RES Massachusetts, USA



**914** The Byrne House sits on a steep and asymmetrical site, in the cooler, cactus-studded terrain of the high desert, framed by the mountains behind. From below, the house appears almost vertiginous, made up of a series of abstract canyon walls of concrete masonry and metal-clad frame walls that embrace the spaces of the main entry, the living areas and the circulation gallery. These asymmetrical, tapering walls also give focus to the angular geometry of the building's plan as it grows from them. The roof, which follows the grade of the hill, is attached to the long central spine of the house by seven brackets so that light seems to spill over the top of the walls. The accommodation itself is arranged over two levels. The lower level, which is partly buried below-grade, contains a bedroom, bathroom, sitting room and office. Upstairs are the main living spaces, as well as the master bedroom which is walled on two sides by full-height glass. To contrast with

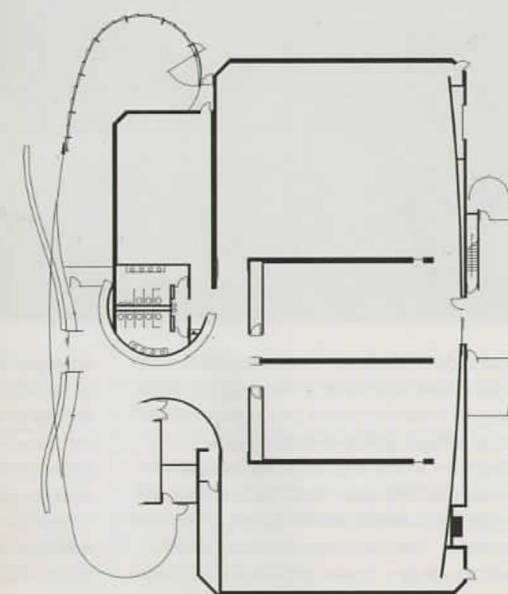
the concrete masonry, wall and fascia elements are clad in copper sprayed with ammonium sulphate, and acid-etched galvanized metal. These materials, with their deep purple, bronze and pewter hues, allow the building to blend in with the natural desert environment.

- 1 The glazed building with its protective roof and the wall of the central spine (left)
- 2 The copper-clad facades are interspersed with ribbon and bay windows
- 3 Interior
- 4 Upper-level plan
- 5 Lower-level plan
- 6 Cross section

**Client**  
Carol Byrne and Bill Byrne

**Area**  
325m<sup>2</sup>/3,500 sq ft

**Cost**  
Confidential



**915** The new wing of the Center for Contemporary Art in the desert city of Scottsdale complements the existing building which was finished in 1975. The new museum appropriates the adjacent cinema complex and successfully adapts five cinema screens into 5,550 square metres (18,500 square feet) of versatile temporary exhibition galleries. The somewhat abstract bulk of the existing stucco theatre block is now covered in a deep purple-grey. The mass of the building is embraced by a rectangular, corrugated-steel service pod and a softly curved arrival pod of flat-seam galvanized steel, both of which serve to unite the new pavilion with its neighbour, and to shape meaningful urban spaces around the complex. On arrival, the visitor is greeted by a luminous, open-weave light sculpture by artist James Carpenter, made from textured glass sheets and dichroic glass spacers that casts fragments of coloured light over the dark walls and earth floor. Inside, the metal exterior wall takes on an undulating yellow interior lining, enfolding the admissions kiosk, shop and, in the future, a café. From here, movement towards the galleries is compressed between swells of steel that contain storage and services. The concrete-floored, white-walled galleries are entered via dramatic 3.6-metre-high (12-foot) maple doors.

- 1 The galvanized steel facade disguises the unexceptional bulk of the existing cinema
- 2 The arrival pod clad in flat-seam galvanized steel
- 3 The arrival pod helps to create better quality public space around the museum
- 4 Gallery entrance
- 5 Floor plan

**Client**  
Scottsdale Cultural Council, City of Scottsdale

**Area**  
1,749m<sup>2</sup>/18,826 sq ft

**Cost**  
US\$2,182,000

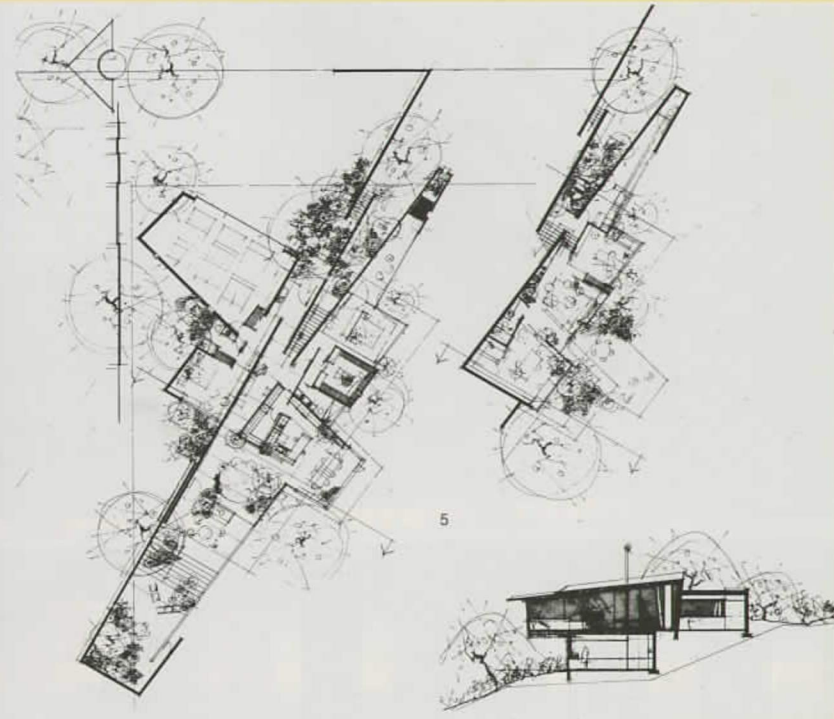


914 Scottsdale, Arizona, USA  
Byrne House  
Will Bruder Architects  
1999  
RES

915 CUL  
Scottsdale, AZ, USA  
939 RES  
Massachusetts, USA

915 Scottsdale, Arizona, USA  
Scottsdale Center for Contemporary Art, Gerard L Cafesjian Pavilion  
Will Bruder Architects  
1999  
CUL

914 RES  
Scottsdale, AZ, USA  
939 RES  
Massachusetts, USA

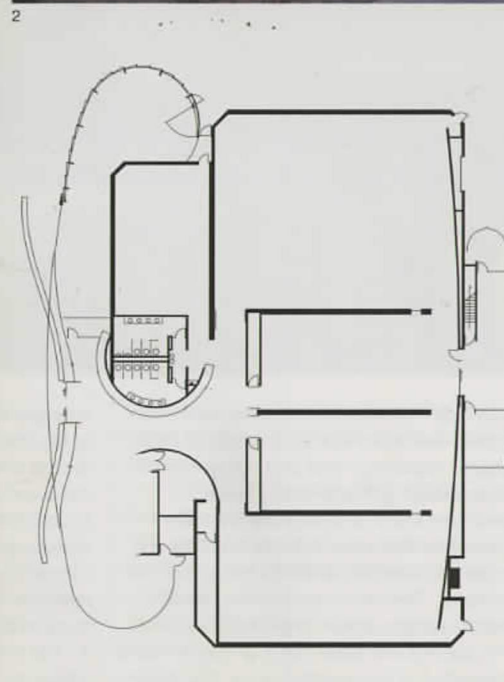
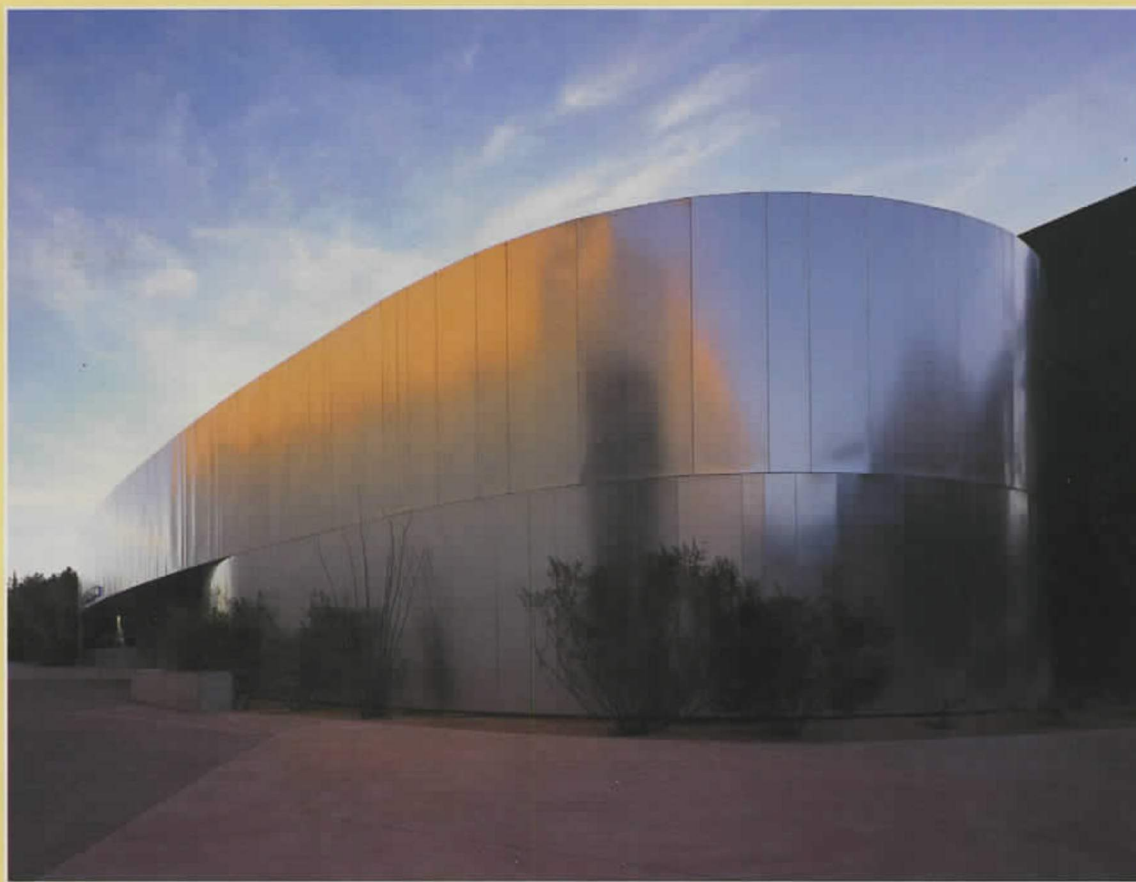


914 The Byrne House sits on a steep and asymmetrical site, in the cooler, cactus-studded terrain of the high desert, framed by the mountains behind. From below, the house appears almost vertiginous, made up of a series of abstract canyon walls of concrete masonry and metal-clad frame walls that embrace the spaces of the main entry, the living areas and the circulation gallery. These asymmetrical, tapering walls also give focus to the angular geometry of the building's plan as it grows from them. The roof, which follows the grade of the hill, is attached to the long central spine of the house by seven brackets so that light seems to spill over the top of the walls. The accommodation itself is arranged over two levels. The lower level, which is partly buried below-grade, contains a bedroom, bathroom, sitting room and office. Upstairs are the main living spaces, as well as the master bedroom which is walled on two sides by full-height glass. To contrast with

the concrete masonry, wall and fascia elements are clad in copper sprayed with ammonium sulphate, and acid-etched galvanized metal. These materials, with their deep purple, bronze and pewter hues, allow the building to blend in with the natural desert environment.

- 1 The glazed building with its protective roof and the wall of the central spine (left)
- 2 The copper-clad facades are interspersed with ribbon and bay windows
- 3 Interior
- 4 Upper-level plan
- 5 Lower-level plan
- 6 Cross section

**Client**  
Carol Byrne and Bill Byrne  
**Area**  
325m<sup>2</sup>/3,500 sq ft  
**Cost**  
Confidential



915 The new wing of the Center for Contemporary Art in the desert city of Scottsdale complements the existing building which was finished in 1975. The new museum appropriates the adjacent cinema complex and successfully adapts five cinema screens into 5,550 square metres (18,500 square feet) of versatile temporary exhibition galleries. The somewhat abstract bulk of the existing stucco theatre block is now covered in a deep purple-grey. The mass of the building is embraced by a rectangular, corrugated-steel service pod and a softly curved arrival pod of flat-seam galvanized steel, both of which serve to unite the new pavilion with its neighbour, and to shape meaningful urban spaces around the complex. On arrival, the visitor is greeted by a luminous, open-weave light sculpture by artist James Carpenter, made from textured glass sheets and dichroic glass spacers that casts fragments of coloured light over the dark walls and earth floor. Inside, the metal exterior wall takes on an undulating yellow interior lining, enfolding the admissions kiosk, shop and, in the future, a café. From here, movement towards the galleries is compressed between swells of steel that contain storage and services. The concrete-floored, white-walled galleries are entered via dramatic 3.6-metre-high (12-foot) maple doors.

- 1 The galvanized steel facade disguises the unexceptional bulk of the existing cinema
- 2 The arrival pod clad in flat-seam galvanized steel
- 3 The arrival pod helps to create better quality public space around the museum
- 4 Gallery entrance
- 5 Floor plan

**Client**  
Scottsdale Cultural Council, City of Scottsdale  
**Area**  
1,749m<sup>2</sup>/18,826 sq ft  
**Cost**  
US\$2,182,000



939 Situated on natural granite ledges at the edge of a forest on the Atlantic Coast, this house is a haven for a family of five. The extensive masterplan began with the demolition of an early-twentieth-century Italianate villa and the remodelling of an existing carriage house which now serves as the guest quarters. The three-hectare (eight-acre) property has become a site-responsive complex which consists of the main residence, a carriage house, an exercise pavilion and several garden and water follies for both summer and winter living. The radially-ordered plan is zoned into crescents of space and arcing stone walls which are pierced as they cross the entry, at which point a cantilevered stainless steel canopy slices through the composition. Defining the outer crescent of this village-like collection of buildings is the main living pavilion and the master bedroom suite, while the secondary crescent, flanked by a black-bottomed stainless steel reflecting pool, contains the children's bedrooms, areas for study, music and play, as well as guest accommodation and the garage. Exterior spaces extend the arcs into a landscape of gardens and terraces, further integrating the building with the land and sea.

- 1 The house is defined by a series of curving stone walls
- 2 Crescents of zoned spaces open up onto the extensive gardens
- 3 Contrasting materials, including blocks of granite and sleek glass and steel sit side-by-side
- 4 The stainless-steel reflecting pool
- 5 Site plan
- 6 Kitchen
- 7 Living area with views over the garden
- 8 First-floor plan

**Client**  
Withheld  
**Area**  
604m<sup>2</sup>/6,500 sq ft  
**Cost**  
Confidential

