

UK £5.95 USA \$11.95 JUNE 1998

**LIBRARIES** Wilson's British Larsen's Malmö Perrault's TGB

# THE ARCHITECTURAL REVIEW





Founded 1896  
Published monthly  
Emap Construct, 151 Rosebery Avenue,  
London EC1R 4QX, UK  
Tel: +44 171 505 6725; fax: 171 505 6701  
E-mail: lynnej@construct.emap.co.uk

Editorial Director and Editor  
**Peter Davey** 0171 505 6725  
Deputy Editor  
**Catherine Slessor** 0171 505 6726  
Art Editor  
**Michelle Ashenden** 0171 505 6727  
Assistant Editor  
**Penny McGuire** 0171 505 6728  
Production Editor  
**Julia Dawson** 0171 505 6729  
Editorial Co-ordinator  
**Lynne Jackson** 0171 505 6725

Associate Publisher  
**Neil Williams** 0171 505 6735  
E-mail: neilw@construct.emap.co.uk  
Deputy Advertisement Manager  
**Charles Glover** 0171 505 6736  
Advertising Sales  
**Danielle Hudson** 0171 505 6742  
Italian Advertising Sales  
**Cesare Fiorucci**  
Tel: (02) 58.31.02.19; fax: (02) 58.31.57.10  
E-mail: fiorint@tin.it  
Recruitment Advertising  
**Emile Azan** 0171 505 6803  
Production  
**Nicola Doran** 0171 505 6741  
Circulation Marketing Manager  
**Mike Aplin** 0171 505 6615  
Publishing Director  
**Rowan Crowley** 0171 505 6618  
Managing Director  
**Simon Middelboe**

**SUBSCRIPTION DETAILS**  
Tel: +44 181 956 3140; fax: 181 956 3020  
UK - £54  
UK students - £40.50  
(UK subscribers only can benefit from a special low subscription rate with The Architects' Journal - £99 or £78 for students)  
Americas - \$85  
Americas students - \$65  
Rest of World - £64  
Rest of World students - £48  
Copies are sent surface mail. Airmail rates on application. American copies air-speeded to New York.  
Please use the order form in this issue to receive your own copy, or contact our SUBSCRIPTION DEPARTMENT at Audit House, Field End Road, Eastcote, Ruislip, Middlesex, HA4 9BR, UK.  
North, Central and South American subscribers: please send orders and queries to Fenner, Reed and Jackson, P.O. Box 754, Manhasset, NY 11030-0754  
Tel: +1 516 627 3836; fax: 516 627 1972

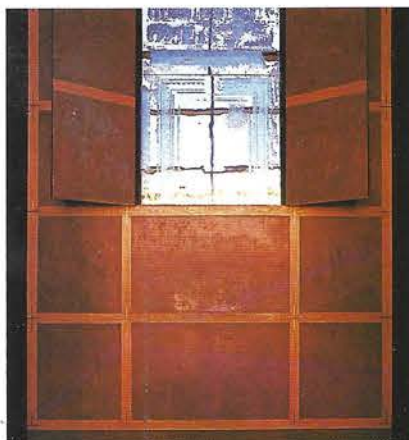
**BACK ISSUES**  
Tel: +44 171 505 6622; fax 171 505 6606  
For prices, contact CRC.  
E-mail: crc@construct.emap.co.uk  
Bound volumes (UK only): contact John Lawrence. Tel: 01234 346692

The Architectural Review (ISSN 0003-861X) is published monthly for \$85 per year by EMAP Construct. RMI, c/o Yellowstone International, 87 Burlews Court, Hackensack NJ 07601. Periodicals Postage Paid at South Hackensack and additional mailing offices.

**ABC**  
BUILDING INFORMATION

ABC BUSINESS PRESS  
Circulation 23 000 (July 1996 - June 1997)  
© Emap Construct 1998

**emap**  
CONSTRUCT



Library visions: MacCormac in Lancaster (p64) ... and Perrault at the Trés Grande Bibliothèque (p77)

## LIBRARIES

### COMMENT

- 4 The need for libraries as buildings

### SURVEY

- 13 Aalto's centenary: he speaks in English and is shown in Helsinki and New York

### DESIGN REVIEW

- 22 AR/Spectrum Award for Product Excellence: results in full

### OUTRAGE

- 31 Piano abuse PIANO DECOR

### THEME

- 34 British Library, St Pancras, London COLIN ST JOHN WILSON & PARTNERS  
52 Public library, Malmö, Sweden HENNING LARSEN  
59 German national library, Frankfurt am Main, Germany ARAT-KAISER-KAISER  
64 Ruskin Library, Lancaster University, England MACCORMAC JAMIESON PRICHARD  
69 Library, Jackson, Wyoming, USA WILLIAM BRUDER

### HISTORY

- 72 Libraries in history CLARE GRAHAM

### INTERIOR DESIGN

- 77 National library, Paris, France DOMINIQUE PERRAULT ARCHITECTE  
82 Royal library, Stockholm, Sweden KÅBE ARKITEKTER

### PRODUCTS SURVEY

- 88 Interior finishes: flooring, dooring and ironmongery

### BOOKS

- 96 Civic realism; Modernity; Japan 2000; airport terminals; Erik Asmussen

### DELIGHT

- 98 Icons from Moscow 1400-1660: Royal Academy exhibition

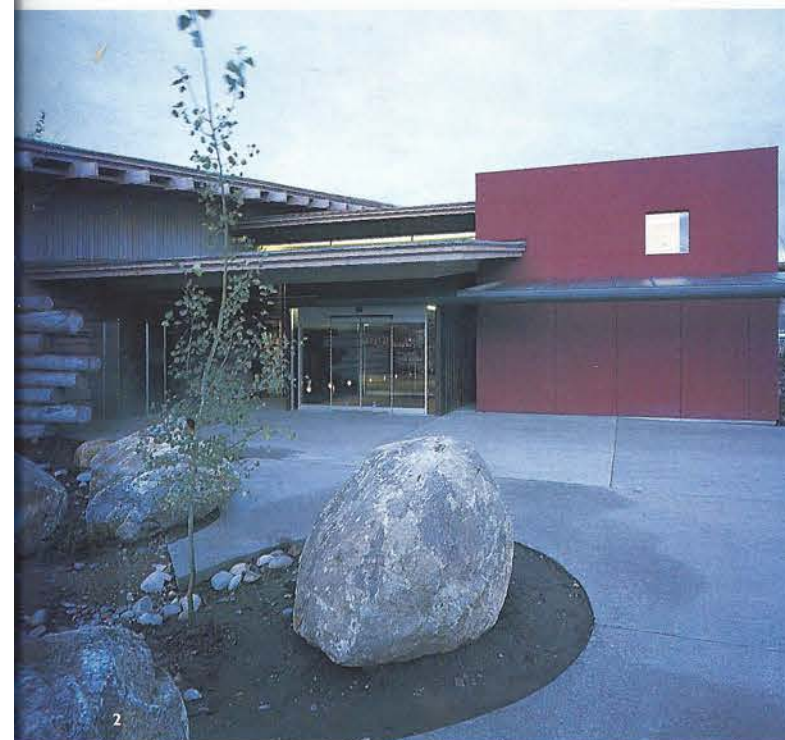
### COVER

- 34 COLIN ST JOHN WILSON & PARTNERS British Library Photograph by Martin Charles



## RUSTIC REGIONALISM

**A new county library in Wyoming draws on the rustic, vernacular style of the regional architecture.**



**LIBRARY, JACKSON, WYOMING, USA**  
ARCHITECT  
**WILLIAM BRUDER**

- 1 The cabin-like form of the new county library recalls Wyoming's rugged vernacular architecture.  
2 Entrance courtyard, landscaped with boulders and saplings.  
3 Timber decks on the south elevation encourage contact with the outside.  
4 Materials and form have a rustic simplicity, appropriate to the rural context.

Designed by William Bruder, the new Teton County Library is a modern reinterpretation of Wyoming's vernacular ranch buildings and the log structures that still populate the region. Bruder's most significant project to date was the central library in Phoenix (AR March 1996), an imposing copper-clad monolith inspired by the mighty forms of the south-west American desert landscape. Here, the programme is necessarily more modest, yet Bruder endows an essentially simple building with humane inventiveness and a lively material presence.

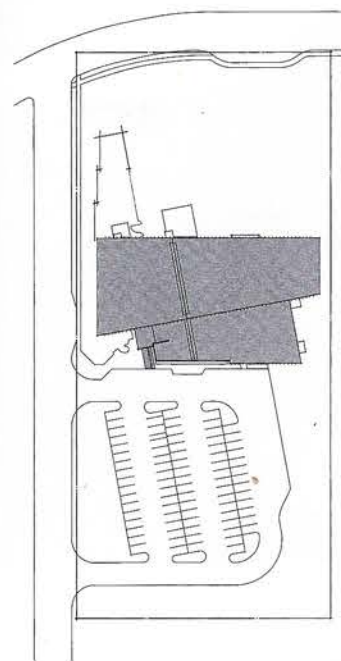
The new library eases gently into a Wild West landscape of rolling forested hills and snow-capped mountains. Lying on the edge of the small town of Jackson, the site is flanked to the north by a busy road. The plan is based on two wedge-shaped volumes pushed together and enveloped by a great oversailing pitched roof, like a big log cabin or ranch house gable. Clad in rough-sawn planking, the larger wedge contains the main public volume of the library, which is



# LIBRARY, JACKSON, WYOMING, USA

ARCHITECT

WILLIAM BRUDER



site plan

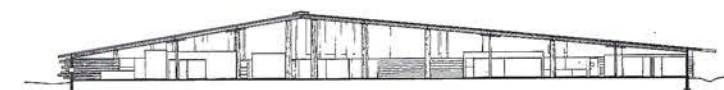
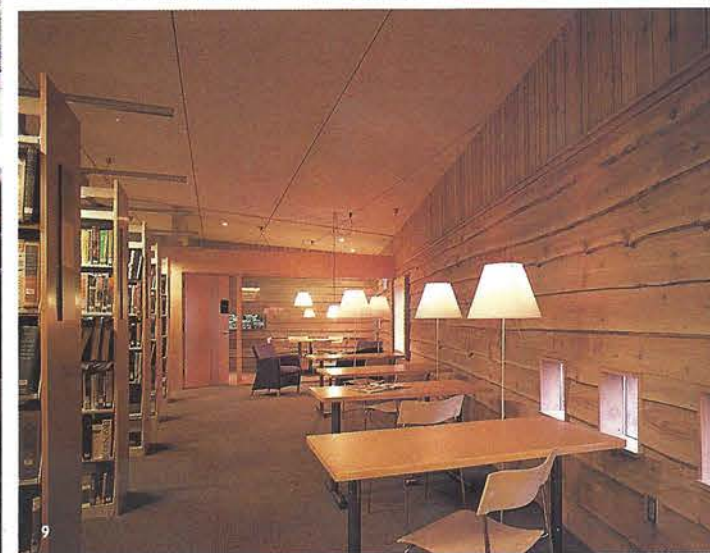
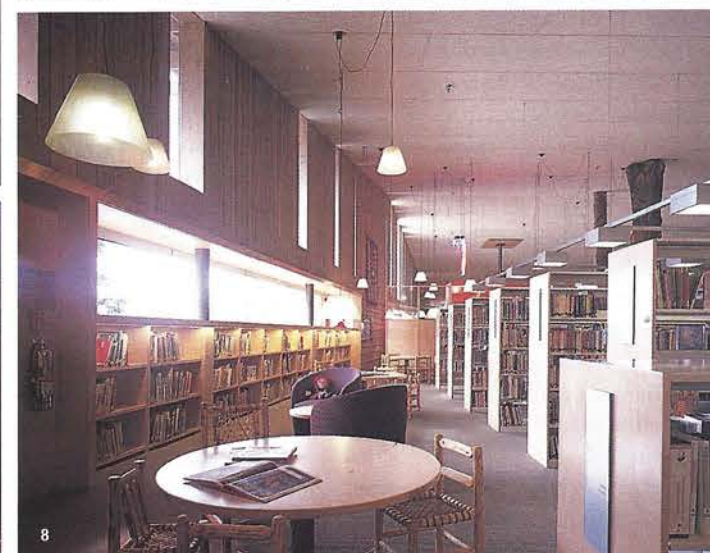
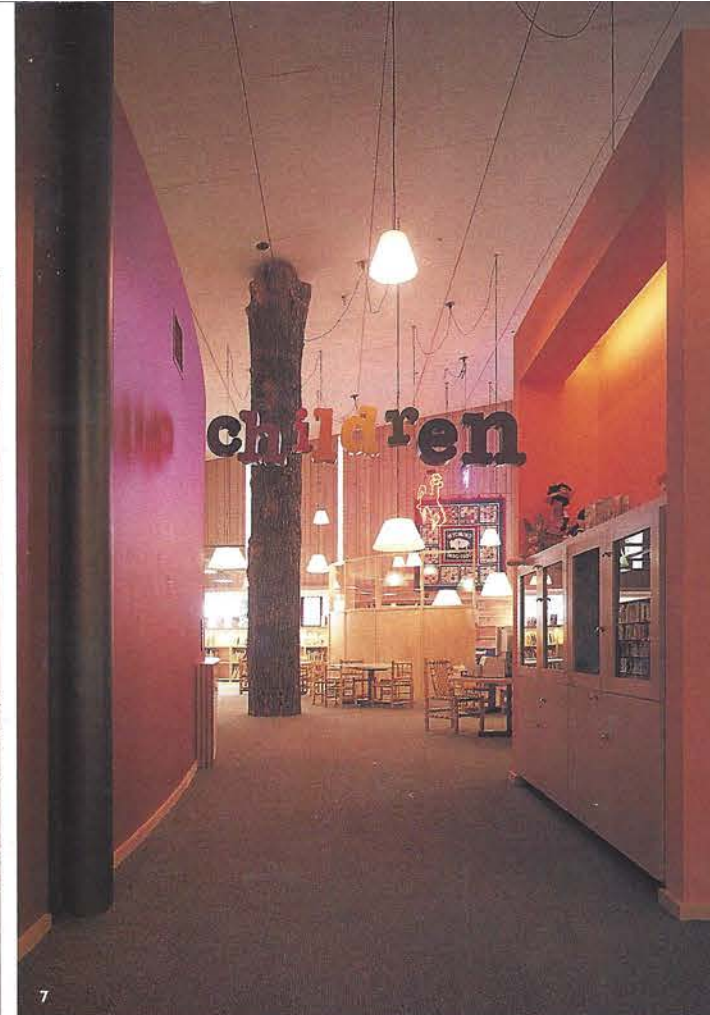
5 The great library room, loosely subdivided by stacks, tables and seating to create many different kinds of reading and study spaces.

6 Informal reading area, with the external deck beyond.

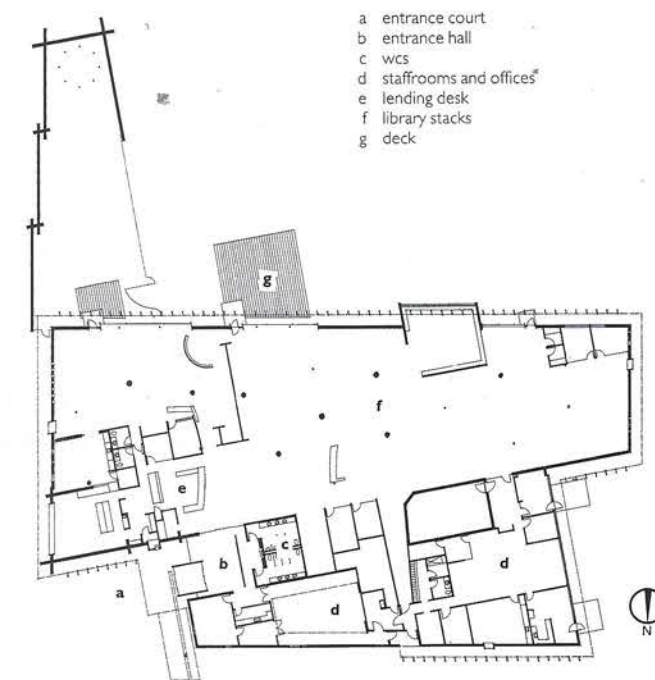
7 Children's library, with bold, colourful signage and child-sized furniture.

8 Narrow strips of clerestory glazing illuminate the reading areas.

9 Desks for individual study.



longitudinal section



ground floor plan (scale approx 1:1000)

conceived as a great luminous room facing south over reading decks, lawns and a courtyard for children's story-telling. The smaller wedge, its walls rendered a deep, oxblood red, houses the library's backstage facilities, such as librarians' offices and staffrooms.

Set between the intersection of the two wedges at the short east end is an entrance portico, overlooking a small courtyard landscaped with saplings and boulders. The gallery-like foyer serves as an antechamber to the main public spaces arranged in the large wedge. Making one sculptural space for the various library functions – general collection, children's collection, Western Americana, periodicals, reference and computer centre – generates both functional flexibility and an agreeable sense of informality. The changing height of the big sloping roof helps to create different kinds of spaces, from double-height reading areas illuminated by strips of clerestory glazing, to more intimate study tables

placed around the edges of the library room. Rugged 'tree-trunk' columns and rough sawn internal planking combine with furnishings of cherry, oak and leather to exude rustic homeliness and warmth.

This is clearly a building well suited to its rural community, but it is also a new civic landmark that distils bold, tectonic poetry out of a utilitarian brief. Bruder's notion of American regionalism is underscored by a romantic pragmatism that responds energetically to both users and context. EFFIE C. MACDONALD

**Architect**  
William P. Bruder, New River, Arizona  
**Project team**  
William P. Bruder, Wendell Burnette, Tim Christ, Jack DeBartolo III, Ben Nesbeitt, Brett Oaks  
**Structural engineer**  
Brickey, Rudow & Berry  
**Mechanical engineer**  
Clark Engineering  
**Electrical engineer**  
C. A. Energy Designs  
**Landscape architect**  
Floor and Ten Eyck  
**Photographs**  
Bill Timmerman