

the cabin book

Linda Leigh Paul

UNIVERSE



CONTENTS

Acknowledgments	5
Introduction	9

PART I Perfect Dependence 21

Colorado Log Cabin	23
Cortes Island Cabin	29
Dune Acres Cabin	35
Minnesota Log Cabin	41
Clam Shack	51
Tew Barn	55
Highland Lake House	61

PART II The Midst of Silence 67

Josie's Cabin	69
Camano Island Cabin	75
Canyon Cabin	81
Ohio Cabin	89
Smith McLain Cabin	95
Von Blon Retreat	99
Forest Guest Cabin	105



PART III Having A Hand in the Seasons 111

Stephentown Cabin	113
Crowell House	119
North Cascades Cabin	125
Mazama Cabin	133
Birding Cabin	139
Sugar Bowl	145
Chicken Point	151

PART IV The Limits of Boundaries 161

Sonoma Country Cabin	163
Carlisle Cabin	169
Logan Cabin	175
Adirondack Cabin	181
Riddell Cabin	187
Long Cabin	193
Point House	199

PART V Adaptation 205

Atkinson/Ramage Cabin	207
-----------------------	-----



(Opposite and Right) The tracery of the tailored geometry emphasizes the delicacy of the natural environment in which it is placed.

RIDDELL CABIN

OWNERS: Lee and Ed Riddell

ARCHITECT: Will Bruder, Will Bruder Architects, Ltd.
Design Team: Richard Jensen, Michael Crooks

PHOTOGRAPHER: Bill Timmerman

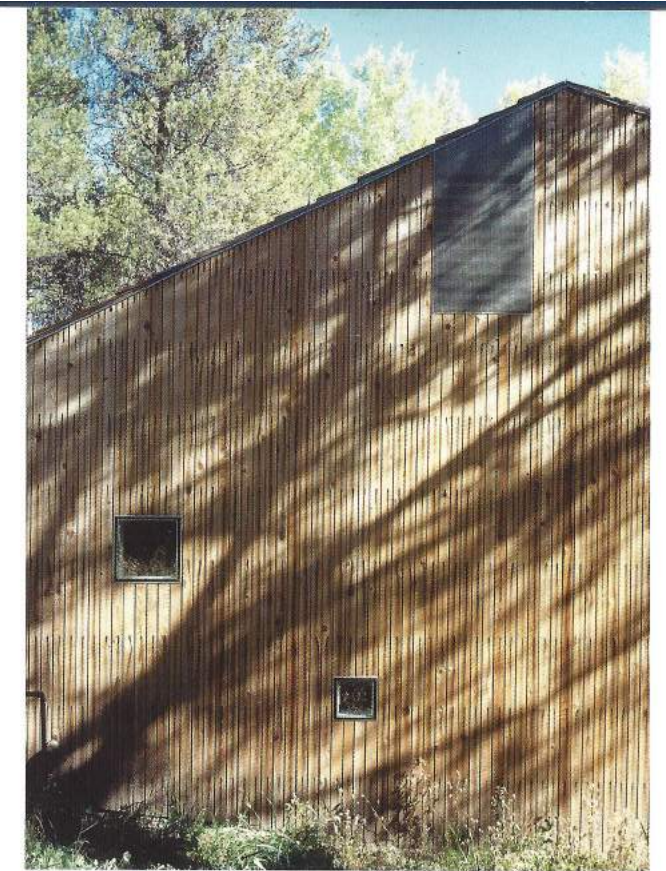
Celebrating the needs of a painter, a photographer, their dog Willow, and their shared passion for the outdoors, this modest wooden sculpture is a refined, simply organized pavilion for life, work, and leisure on forested land in Wyoming.

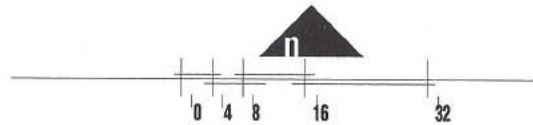
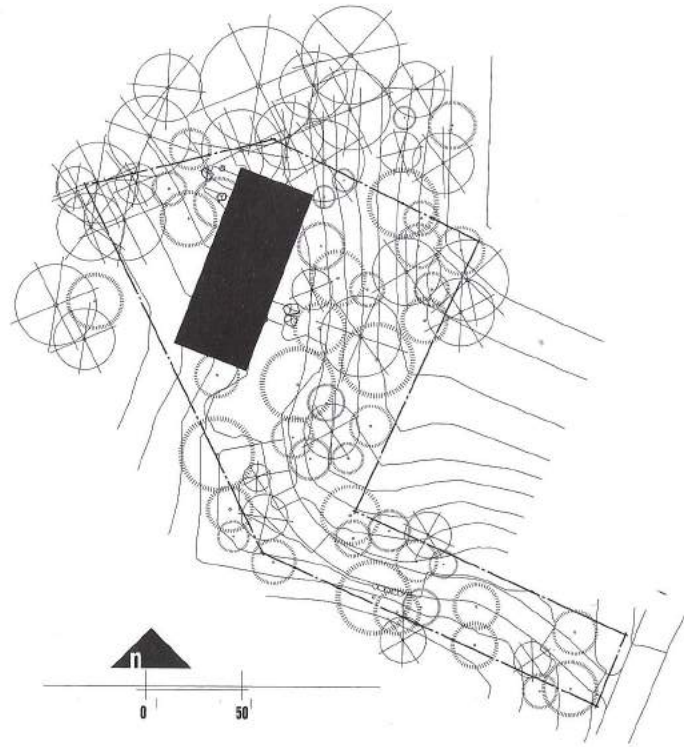
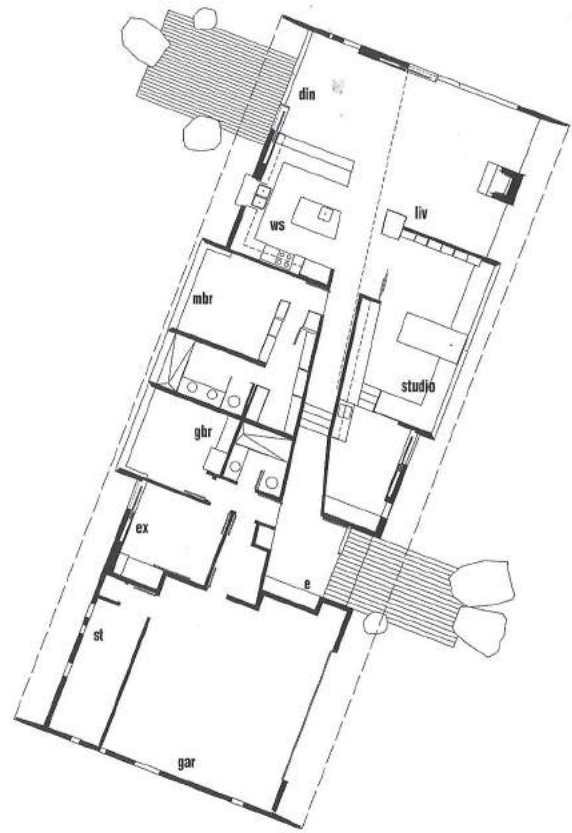
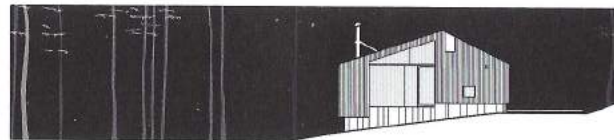
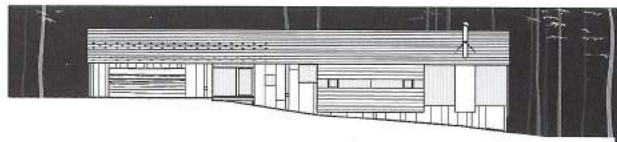
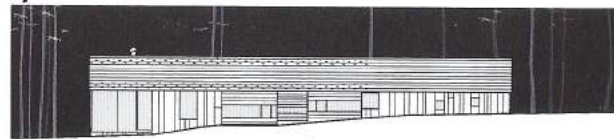
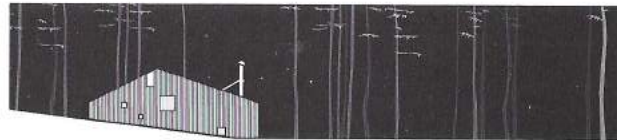
This crisp and tailored plan was conceived and developed from the outside in and the inside out. The taut surfaces of 1" x 3" resawn cedar boards, with their subtle shadow joints, are left to weather—like the simple quiet of a Wyoming shed or the severe rigor of an Anges Martin painting. Set into the cedar siding, flush, polished stainless-steel-framed

square windows emphasize the tautness of the exterior surface and hint at the refinement of the interior finish. The reflections of the forest on the glass balance and counter the play of shadows on the texture of the aging cedar skin.

The interiors are finished with smooth, off-white walls, complemented with black slate and maple-strip flooring. Details such as custom-finished maple cabinets, translucent fiberglass shoji screens, and a hot-rolled, black steel-plate fireplace are a part of the architecture. Space is divided between the private and the common. A compressed entry is a gallery of maple,

which extends on a diagonal geometry through the house to the living, dining, and kitchen areas. In the entry gallery area the vertical scale opens and large windows frame the striking verticals of an aspen grove beyond the glass. Off the long corridor gallery, blind maple doors conceal private sleeping suites for the owners and for guests. Innovation and detail in spatial arrangements begins at the ridge cap of the cedar-shingle roof and is considered everywhere. The owners' landscape architect, Mother Nature, cherishes the cabin that disappears into her and reflects her best.





(Upper left) View of each elevation
(Lower left) Floor plan (Lower right) Site plan
(Opposite) The dominant feature of the living room is the large, elegantly designed, hot-rolled, black steel-plate fireplace.





(Upper left) The "compressed" gallery of maple paneling is a diagonal path from the main entrance through the house to the kitchen, dining, and living room areas. (Lower right) A private studio is concealed behind custom-made translucent fiberglass shoji screens. (Lower left) Precision is the main feature of the maple and stainless steel kitchen and work island. (Opposite) The entrance is a balanced composition of volumes and planes.

